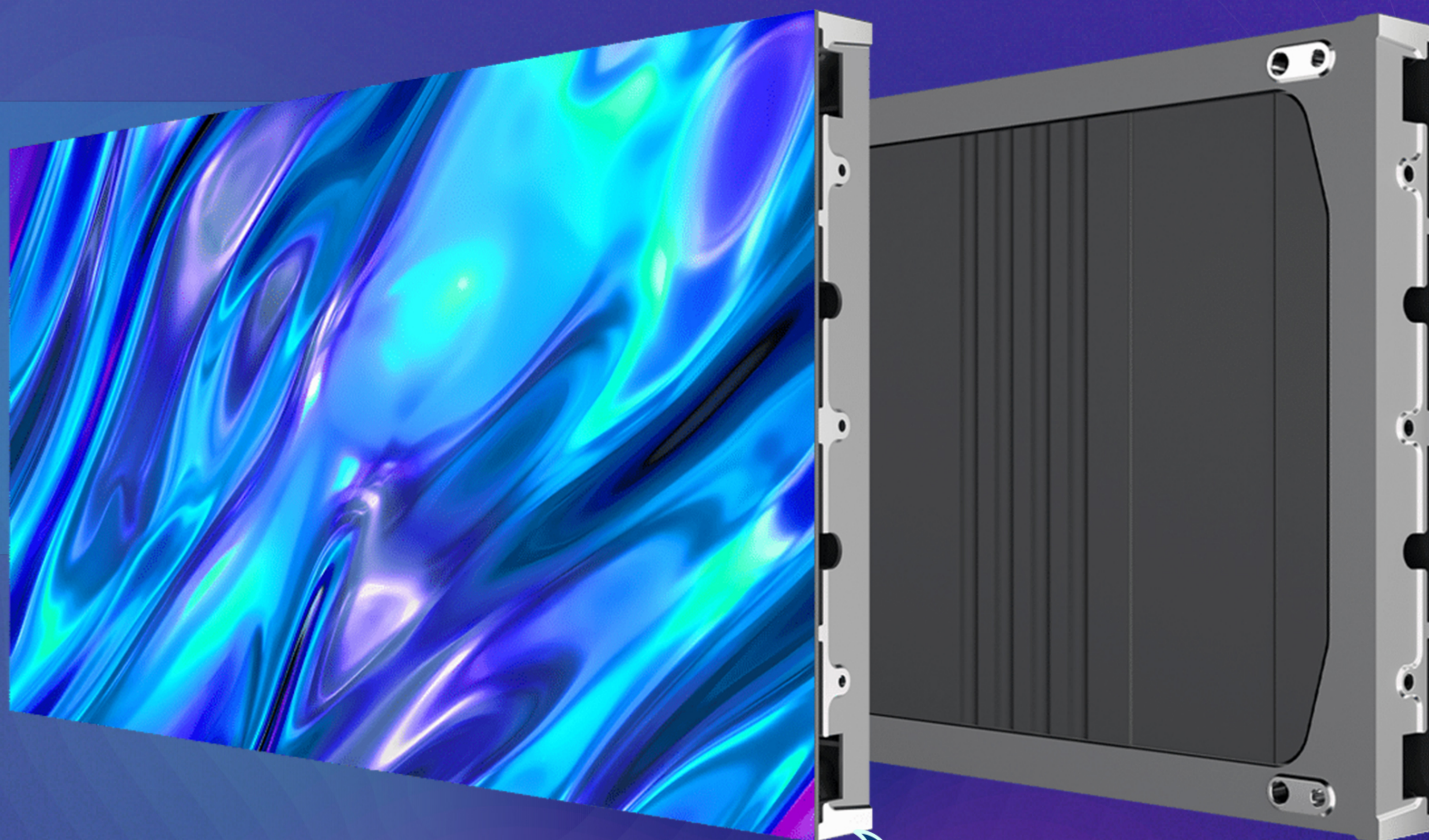


DV SERIES COB

newline

ACTIVE LED SOLUTION



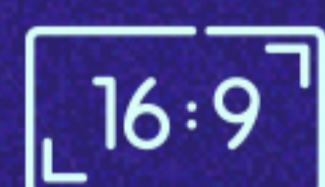
Available in multiple pixel pitch options

0.93mm, 1.25mm, 1.56mm and 1.87mm

ALL NEW

COB Technology

COB (The Chip-on-Board) technology adopts flip-chip design, eliminating bonding wires by mounting LED chips directly onto the substrate. This enables a finer pixel pitch for higher resolution and contrast ratio, while offering enhanced durability. With IP54 and up-to-IP68 protection, it ensures reliable, low-maintenance operation in demanding environments.



Aspect Ratio 16:9



Contrast ratio 10,000:1



Brightness up to 800 nits

Ultra-High Contrast



Immersive Visual Experience



COB Technology



High Contrast & Color Consistency



170° Ultra-wide Viewing Angle



Ultra High Refresh Rate



Easy Front Maintenance



Immersive Visual Experience

DV SERIES COB

Model NO	DVC - 0.9P	DVC - 1.2P	DVC - 1.5P	DVC - 1.8P
Pixel Pitch (mm)	0.93 pixel pitch	1.25 pixel pitch	1.56 pixel pitch	1.87 pixel pitch
Pixel Configuration	COB	COB	COB	COB
Module Size (mm)	300 x 168.75	300 x 168.75	300 x 168.75	300 x 168.75
Module Size (inches)	11.81 x 6.64	11.81 x 6.64	11.81 x 6.64	11.81 x 6.64
Module Resolution	320 x 180	240 x 135	192 x 108	160 x 90
Unit Layout (W×H)	2 x 2	2 x 2	2 x 2	2 x 2
Cabinet Size (mm) (W×H×D)	600 x 337.5 x 40	600 x 337.5 x 40	600 x 337.5 x 40	600 x 337.5 x 40
Cabinet Size (mm) (W×H×D)	1200*675*40mm	1200*675*40mm	1200*675*40mm	1200*675*40mm
Cabinet Resolution (W×H)	640 x 360	480 x 270	384 x 216	320 x 180
Cabinet Density (m ²)	0.2025	0.2025	0.2025	0.2025
Pixel Density (Dots/m ²)	1137777	640000	409600	284444
Cabinet Material	Die-cast aluminum	Die-cast aluminum	Die-cast aluminum	Die-cast aluminum
Cabinet Weight (kg)	3.9	3.9	3.9	3.9
Cabinet Flatness (mm)	≤0.1	≤0.1	≤0.1	≤0.1
Brightness (nits)	0-800 (Adjustable)	0-800 (Adjustable)	0-800 (Adjustable)	0-800 (Adjustable)
Color Temperature (K)	2000-12000 (Adjustable)	2000-12000 (Adjustable)	2000-12000 (Adjustable)	2000-12000 (Adjustable)
Viewing Angle (H/V)	170°/170°	170°/170°	170°/170°	170°/170°
Brightness Uniformity	≥98%	≥98%	≥98%	≥98%
Color Uniformity	Within ±0.0035 Cx, Cy	Within ±0.0035 Cx, Cy	Within ±0.0035 Cx, Cy	Within ±0.0035 Cx, Cy
Contrast Ratio	10000:1	10000:1	10000:1	10000:1
Max Power Consumption	≤400	≤350	≤350	≤350
Average Power Consumption	≤133	≤115	≤115	≤115
Working Voltage (V)	AC100~240V (50~60Hz)	AC100~240V (50~60Hz)	AC100~240V (50~60Hz)	AC100~240V (50~60Hz)
Drive Mode	Constant current drive	Constant current drive	Constant current drive	Constant current drive
Frame Rate (Hz)	50/60	50/60	50/60	50/60
Refresh Rate (Hz)	3840	3840	3840	3840
Grey Scale (Bit)	14	14~16	14~16	14~16
Operating Temperature (°C)	-10~+40	-10~+40	-10~+40	-10~+40
Operating Temperature (°F)	14~104	14~104	14~104	14~104
Operating Humidity (RH)	10~80%, Non-Condensing	10~80%, Non-Condensing	10~80%, Non-Condensing	10~80%, Non-Condensing
Life Span	100,000 Hours	100,000 Hours	100,000 Hours	100,000 Hours
Scan rate	1/64	1/60	1/64	1/45
Chip	SANAN '0306	SANAN '0306	SANAN '0306	SANAN '0306
Driving Mode	Common cathode	Common anode	Common anode	Common anode
IC	ICN1069	ICN1069	ICN1069	ICN1069
Maintenance Method	Front	Front	Front	Front
IP Rating	Front IP41 / Rear IP20	Front IP41 / Rear IP20	Front IP41 / Rear IP20	Front IP41 / Rear IP20

newline

1-800-419-0309
www.newlineinteractive.in

Chennai

Door Nos:684 to 690, Unit No 3B2, 10th Floor, Seethakathi Business Centre, Thousand Lights, Anna Salai, Chennai – 600 006.

Gujarat

104, 1st Floor, Shilp Arista, Opposite Stellar, Sindhu Bhavan Road, Thaltej, Ahmedabad 380015, Gujarat