

newline

Connect. Create. Collaborate.

TRU TOUCH **X** Series



UNIFIED COLLABORATION SYSTEM

CAST **BROADCAST** **DISPLAY MANAGEMENT** **LAUNCHCONTROL** **WORKSPACE**



Microphone Array
Noise & Echo Cancelling



Built-In Cameras
1080p Wide-Angle



Front Speakers
High-Quality Sound



On-Board PC
Optional OPS PC



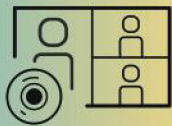
Diverse Connectivity
Multi-Interface Support



BYOD Enabling
Cast & Share Screens

ALL-IN-ONE SOLUTION FOR UNIFIED COLLABORATION

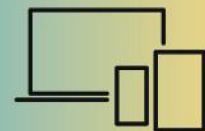
Set no limits to simple and smart collaboration in the workplace



Ideal for one stop
video conferencing
needs



Optically bonded
4K display to
redefine clarity



Bring your
own device

65"

75"

86"



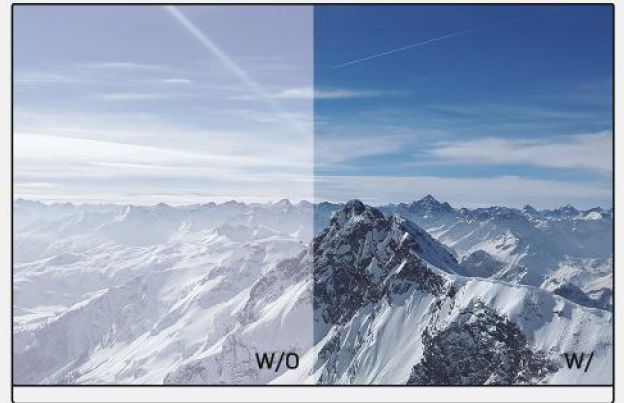
SEAMLESS COLLABORATION

All the tools you need for interactive collaboration, all in one display. Give video conferences, BYOD-enabled meetings, and engaging presentations. Share and broadcast personal device screens wirelessly and hassle-free.

OPTICAL BONDING TECHNOLOGY

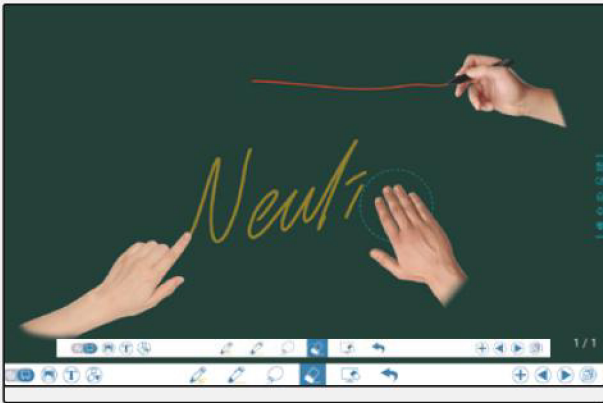
Ultra-wide 178° viewing angle for clear, robust images no matter where you sit in the room.

Optical bonding brings an improved visual experience with accurate touch and a sturdier display. The benefits are endless.



SUPERIOR WRITING EXPERIENCE

Object Recognition and InGlass™ touch technology give you the smoothest, most intuitive writing experience available. Write with a thin pen, erase with your palm, and set memory functions. Collaborate easily and comfortably without limitations.



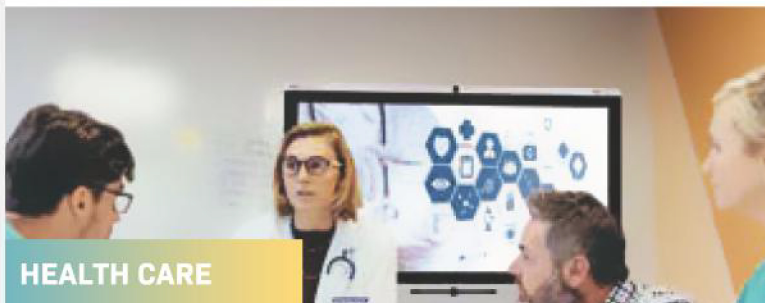
APPLICATIONS



MEETING ROOM



HIGHER EDUCATION



HEALTH CARE



PUBLIC SECTOR

PRODUCT SPECIFICATION

MODEL NAME	X6	X8	X9
DISPLAY			
BACKLIGHT	LED	LED	LED
DISPLAY AREA	1428.48*803.52MM	1650.24*928.26MM	1895.04X 1065.96MM
ACTIVE SCREEN SIZE	85INCH	75 INCH	85.6 INCHES(2174.27 MM) DIAGONAL
DISPLAY RATIO	16:9	16:9	16:9
RESOLUTION	3840 X 2160PIXEL	3840 X 2160PIXEL	3840 X 2160PIXEL
DISPLAY COLORS	8 BIT + FRC (1.07 BILLION)	8 BIT + FRC (1.07 BILLION)	10-BIT, 1.07 BILLION COLORS
BRIGHTNESS	≥370NIT	≥370NIT	≥370NIT
CONTRAST	4000:1	4000:1	4000:1
RESPONSE TIME	8MS	8MS	8MS
VIEWING ANGLE	178°	178°	178°
LIFE TIME	≥30000HRS(MIN.)	≥30000HRS(MIN.)	≥30000HRS(MIN.)
SPEAKER			
SPEAKER POSITION	FORWARD	FORWARD	FORWARD
RATED IMPEDANCE	8 Ω	8 Ω	8 Ω
FREQ.RESPONSE	80 - 18K HZ	80 - 18K HZ	80 - 18K HZ
OUTPUT S.P.L.	88 ± 3 DB	88 ± 3 DB	88 ± 3 DB
RETED.POWER OUTPUT	20W	20W	20W
RATED IMPEDANCE	8Ω	8Ω	8Ω
FREQ.RESPONSE	20-18K HZ	20-18K HZ	20-18K HZ
OUTPUT S.P.L.	≤13W	≤13W	≤13W
MAX.POWER OUTPUT	2 X15W	2 X15W	2 X15W
MICROPHONE			
SENSITIVITY	-38DBV±3DB	-38DBV±3DB	-38DBV±3DB
FREQUENCY RESPONSE	62HZ - 12.5KHZ	62HZ - 12.5KHZ	62HZ - 12.5KHZ
SAMPLING FREQUENCY	48KHZ	48KHZ	48KHZ
POLAR PATTERNS	OMNI-DIRECTIONAL	OMNI-DIRECTIONAL	OMNI-DIRECTIONAL
THD +N (1KHZ @ +4DBU)	<0.05%	<0.05%	<0.05%
PICKUP RANGE	8 METERS	8 METERS	8 METERS
QUANTITY	1 ARRAY(4 MICROPHONES)	1 ARRAY(4 MICROPHONES)	1 ARRAY(4 MICROPHONES)
CAMERA			
POSITION	TOP X 1 & BOTTOM X 1 (ONLY ONE CAN USE IN THE SAME TIME)	TOP X 1 & BOTTOM X 1 (ONLY ONE CAN USE IN THE SAME TIME)	TOP X 1 & BOTTOM X 1 (ONLY ONE CAN USE IN THE SAME TIME)
SENSOR	2M PIXELS	2M PIXELS	2M PIXELS
LENS	72°	72°	72°
VIDEO RESOLUTION	1920*1080@30FPS (MAX)	1920*1080@30FPS (MAX)	1920*1080@30FPS (MAX)
FRAME RATE	30FPS/60FPS	30FPS/60FPS	30FPS/60FPS
ELECTRICAL			
POWER CONSUMPTION	MAXIMUM <= 250 W STANDBY MODE <= 0.5 W	MAXIMUM <= 400 W STANDBY MODE <= 0.5 W	MAXIMUM <= 450 W STANDBY MODE <= 0.5 W
WORKING VOLTAGE	AC 100-240V, 50/60HZ	AC 100-240V, 50/60HZ	AC 100-240V, 50/60HZ
TOUCH			
TOUCH SURFACE	OPTICAL BONDING , ANTI-GLARE TEMPERED GLASS + ANTI-FINGER PRINT	OPTICAL BONDING , ANTI-GLARE TEMPERED GLASS + ANTI-FINGER PRINT	OPTICAL BONDING , ANTI-GLARE TEMPERED GLASS + ANTI-FINGER PRINT
TRANSPARENCY	88%	88%	88%
SURFACE HARDNESS	7H	7H	7H
HID SUPPORT	HID	HID	HID
TOUCH POINTS	ANDROID 4 TOUCH POINTS WRITING; 5 POINTS AS ERASER WINDOWS 20 TOUCH POINTS AVAILABLE	ANDROID 4 TOUCH POINTS WRITING; 5 POINTS AS ERASER WINDOWS 20 TOUCH POINTS AVAILABLE	ANDROID 4 TOUCH POINTS WRITING; 5 POINTS AS ERASER WINDOWS 20 TOUCH POINTS AVAILABLE
WRITING TOOLS	STYLUS, FINGER, ERASER	STYLUS, FINGER, ERASER	STYLUS, FINGER, ERASER
SCAN TIME	6.7MS	6.7MS	6.7MS
SCAN SPEED	150 HZ	150 HZ	150 HZ
POSITIONING ACCURACY	CENTER AREA 1.0-1.5 MM \ EDGE AREA 1.2-2.0 MM	CENTER AREA 1.0-1.5 MM \ EDGE AREA 1.2-2.0 MM	CENTER AREA 1.0-1.5 MM \ EDGE AREA 1.2-2.0 MM
COMMUNICATION INTERFACE	USB-A	USB-A	USB-A
TRANSMISSION RANGE	5M	5M	5M
TRANSPORTATION/STORAGE			
STORAGE TEMPERATURE/HUMIDITY	-10°C~50°C/10%~90%	-10°C~50°C/10%~90%	-10°C~50°C/10%~90%
WORKING TEMPERATURE/HUMIDITY	0°C~40°C/10%~90%	0°C~40°C/10%~90%	0°C~40°C/10%~90%
MOUNTING (OPTIONAL)	WALL-MOUNTED / FLOOR STAND	WALL-MOUNTED / FLOOR STAND	WALL-MOUNTED / FLOOR STAND
OUTLINE DIMENSION	1568X1045X88MM	1792X1170X102MM	2039X1315X101MM
PACKING DIMENSION	1720*275*1170MM	1918X275X1295MM	2175*345*1410MM
NET WEIGHT	45KGS	55KGS	72KG
GROSS WEIGHT	56KGS	71KGS	94KG
SPECIALITY			
INTELLIGENT THERMO PROTECTOR	YES	YES	YES
BUILD IN WIFI	2.4G/5G(OPTIONAL)	2.4G/5G(OPTIONAL)	2.4G/5G(OPTIONAL)
MOUSE	MOTION SENSING	MOTION SENSING	MOTION SENSING
KEYBOARD	NON-STANDARD (44 KEY)	NON-STANDARD (44 KEY)	NON-STANDARD (44 KEY)
CERTIFICATES			
REGULATIONS	CB,EMC,ERP,FCC,LVD,RED,UL NOTIC OF AUTHORIZATION , BIS	CB,EMC,ERP,FCC,LVD,RED,UL NOTIC OF AUTHORIZATION	CB,EMC,ERP,FCC,LVD,RED,UL NOTIC OF AUTHORIZATION , BIS

BUILT-IN APPS

Everything you need to schedule meetings, manage e-mails, save and open files with the cloud and work on documents, all with Newline's built-in apps. Collaborate locally and remotely, easily.



newline
Connect. Create. Collaborate.

HiteVision

CHENNAI

Room No. 202, 203, 211
No.37, Workafella, TTK Road, Alwarpet,
Chennai-600018, Tamil Nadu

GUJARAT

104, 1st Floor, Shilp Arista, Opposite
Stellar, Sindhu Bhavan Road, Thalthej,
Ahmedabad 380015, Gujarat

DELHI

Unit No. A-717, 7th Floor,
DLF Tower A, Jasola District Centre,
New Delhi- 110025

KOLKATA

RAIKVA Tower 3A, Ram Mohan
Mullick Garden Lane, 3rd Floor, Suit No - 309
Kolkata, West Bengal 700010

MUMBAI

1st Floor,B-107, Kanakia Wall Street,
Chakala, Andheri Kurla Road,
Andheri East Mumbai-400059, Maharashtra.



1-800-419-0309 | www.newlineinteractive.in